

## Construction project for a modern style villa with sea views in Calpe



Construction project for a modern style villa with sea views in Calpe and located in a well-known urbanization in Calpe. The villa is located on a southwest-facing plot and enjoys panoramic views of the Peñón de Ifach and the coastal area of Calpe.

The layout of the house is made up of two different areas on the same floor:

- Day area, which includes the spaces dedicated to the entrance hall, living-dining room, guest toilet, modern and fully equipped kitchen, laundry area, garage and technical area. These spaces lead out to a large porch area with direct access to the pool.

- Night area, which includes the spaces dedicated to bedrooms and bathrooms. It is distributed in 4 bedrooms, two of them with en-suite bathrooms. The bedrooms face a sunny area with views of the Peñón de Ifach.

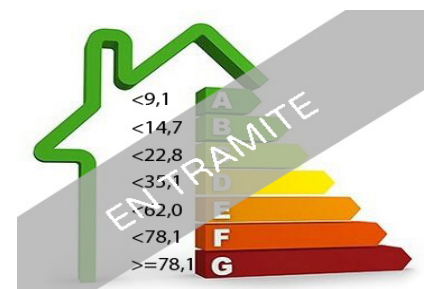
On the upper floor there is a solarium from where you can enjoy panoramic views of the sea, the Peñón de Ifach or the Calpe skyline.

Outside there is a 10x4 infinity pool and a large terrace and garden with automatic irrigation, a parking area with two spaces, one closed and the other under an aluminum pergola.

The house will be equipped with:

- Underfloor heating. Regulation by thermostats.
- Exterior carpentry in matt black aluminum for sliding windows and tilt-and-turn doors with double glazing with

**Ref:** C200404  
**Price:** 1750000.00 €  
**Locality:** [Spain](#)  
[Alicante](#)  
[Costa blanca](#)  
[Calpe](#)  
**Type of property:** [House / Villa](#)  
[New Constructions](#)  
[Luxury villas](#)  
[Modern design villa](#)  
**Property classification:** [For sale](#)  
**Construction:** 242 m2  
**Plot:** 1001 m2  
**Bathrooms:** 3  
**Bedrooms:** 4  
**Additional characteristics:** Vistas al mar  
Piscina



Calificación energética

an air chamber and thermal break.

- Interior carpentry: smooth passage doors lacquered in matt white, hidden hinge and magnetic handle.

- Electrically operated roller shutters in bedrooms and bathroom.

- Alarm installation connected to a home automation system. Access to camera control via WIFI.

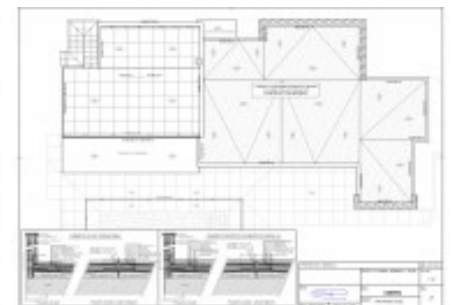
- In bathrooms it includes suspended toilets, screens, bathroom furniture, sinks, shower trays and mirrors with anti-fog.

- Kitchen equipped with SIEMENS brand appliances

- Built-in wardrobes in bedrooms.

Etc.

[Ver más información sobre esta propiedad en nuestra página web](#)



```
ctSetCookie("ct_check_js", "16043dacf17ac2a58753360689072bd2", "0");
```