

## Newly built modern style semi-detached house in Calpe



Newly built modern style semi-detached house in Calpe (Costa Blanca, Alicante). This is a promotion of 17 semi-detached and semi-detached houses in a private and gated community, just 2 km from the Arenal-Bol beach. The views towards the Peñón de Ifach and Sierra de Oltá are magnificent.

All houses are located on individual plots, have covered parking, a garden and solarium and common spaces such as the community pool, the paddle tennis court and interior garden areas of the urbanization with walks and living areas.

The property is distributed on two floors:

On the ground floor there is a guest toilet, and a modern and fully equipped kitchen open to the living-dining room. From the living-dining room you have direct access to a porch with a private garden.

On the ground floor there are 3 bedrooms and 2 bathrooms (one of the bedrooms has an en-suite bathroom). All bedrooms have access to a private terrace/balcony.

On the roof we find a small solarium.

The property also has a covered parking lot within the same plot.

Among its equipment stands out:

### - CARPENTRY

- Black aluminum exterior would be Magna Thermic

**Ref:** C200384

**Price:** 465000.00 €

**Locality:** [Spain](#)

[Alicante](#)

[Costa blanca](#)

[Calpe](#)

**Type of**

**property:** [Semi-detached houses and bungalows](#)

**Property classification:** [For sale](#)

**Construction:** 139 m2

**Plot:** 141 m2

**Bathrooms:** 2

**Bedrooms:** 3

**Additional**

**characteristics:** Piscina



Calificación energética



on sliding doors, with thermal break and Omega Thermic on practicables, with thermal break.

- Pre-installation of connection point for electric curtains.
- Double glass glazing with insulation chamber, type Platitherm 4+4 4s\_c14gas 4+4.
- Interior passage doors in wood, smooth white finish.
- Built-in wardrobes, with drawers, bar and upper shelf.
- Balconies with safety glass carpentry.
- Home entrance door with three security points

## **- BATHROOMS**

- Equipped with white porcelain toilets and Roca model MF" single-handle faucets or similar.
- Shower screen.

## **- FLOORING AND TILING**

- Premium quality stoneware ceramic flooring from the SALONI brand throughout the home.
- Tiled to the ceiling with top quality tiles in the bathrooms and kitchen, from the SALONI brand throughout the home.

## **- KITCHEN**

- Equipped with high and low furniture, granite countertop or similar, induction ceramic hob, refrigerator, oven, microwave, dishwasher and Teka or similar brand extractor hood, single sink and single-lever taps.

## **- FACILITIES**

- Intercom.
- Ducted air conditioning installations.
- Installation of heating through arothermal underfloor heating.
- Installation of an arothermal system for heating domestic hot water.

## **- URBANIZATION AND COMMON AREAS**

- Private and closed urbanization.
- Common areas inside the urbanization with gardens, with walks and living areas.
- Community pool, children's swimming areas and areas for adults.
- Shower area.
- Mailboxes.

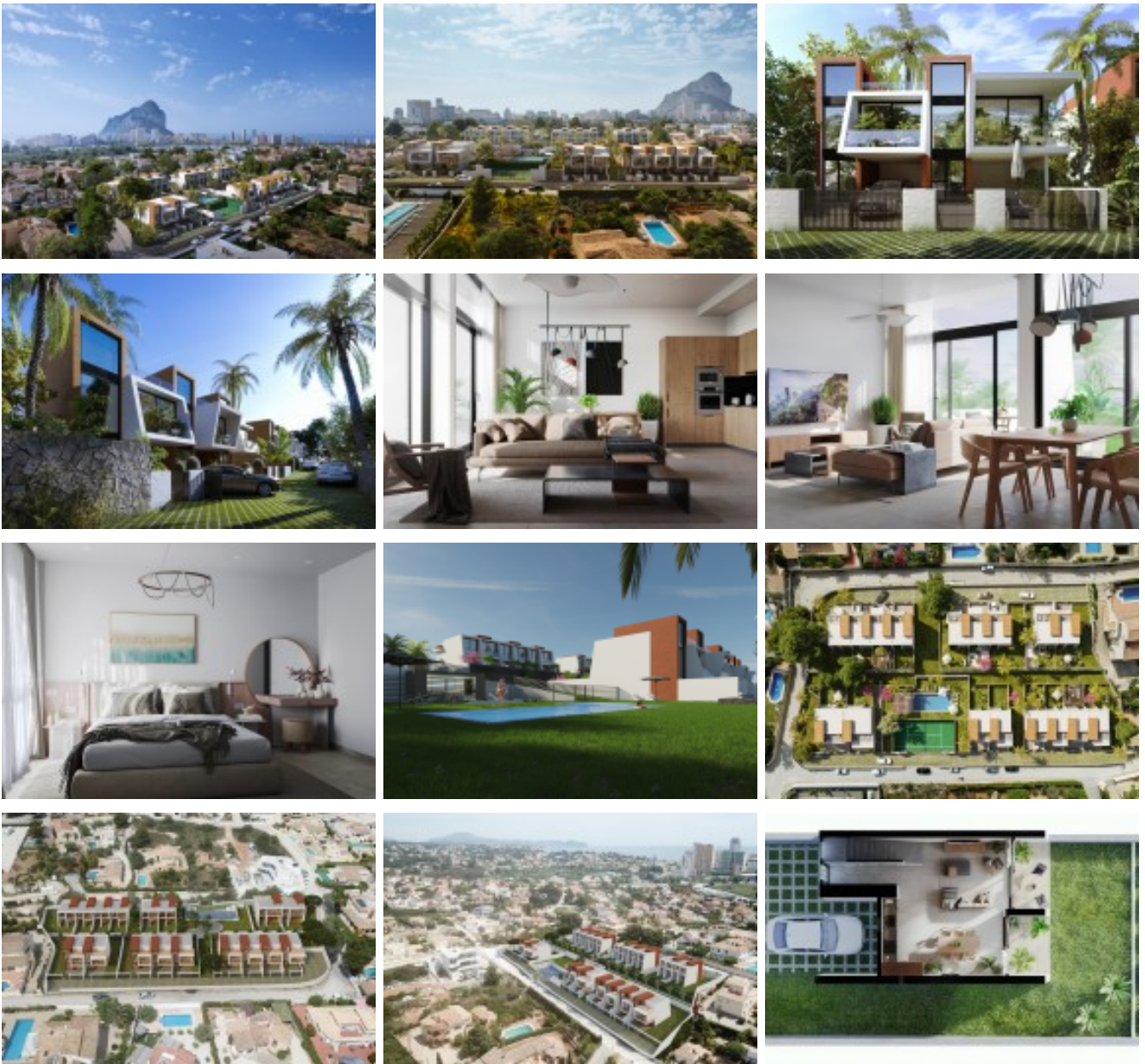
- Community paddle tennis court.

## - DECENIAL INSURANCE AND OTHERS

- Ten-year insurance policy.
- Type A housing energy classification.

**There are more homes available in this residential area. Ask about availability and prices**

[Ver más información sobre esta propiedad en nuestra página web](#)



```
ctSetCookie("ct_check_js", "16043dacf17ac2a58753360689072bd2", "0");
```